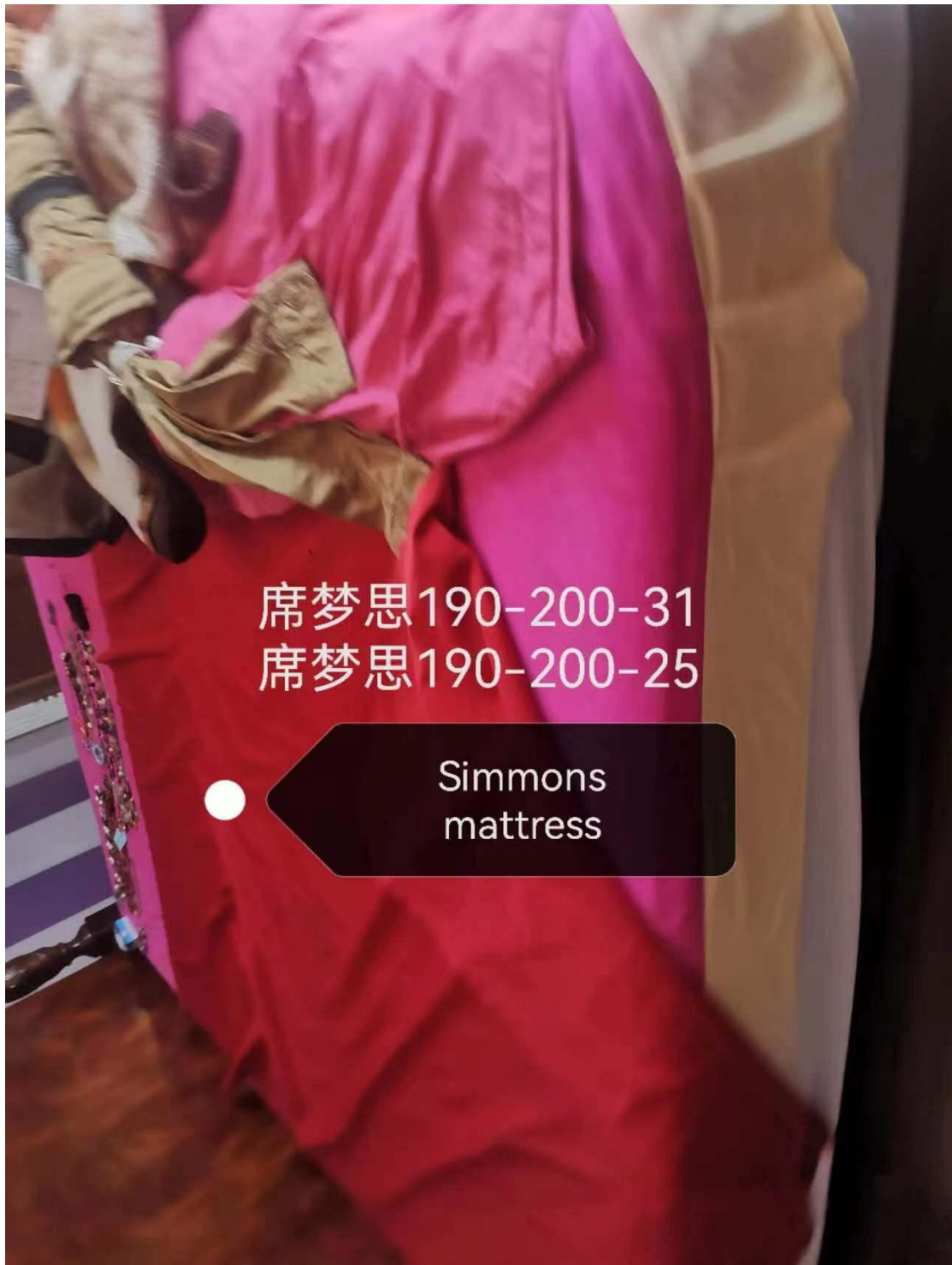




桃花心木  
mahogany

102-112-10  
三块桌面  
68-24-10  
四支桌腿



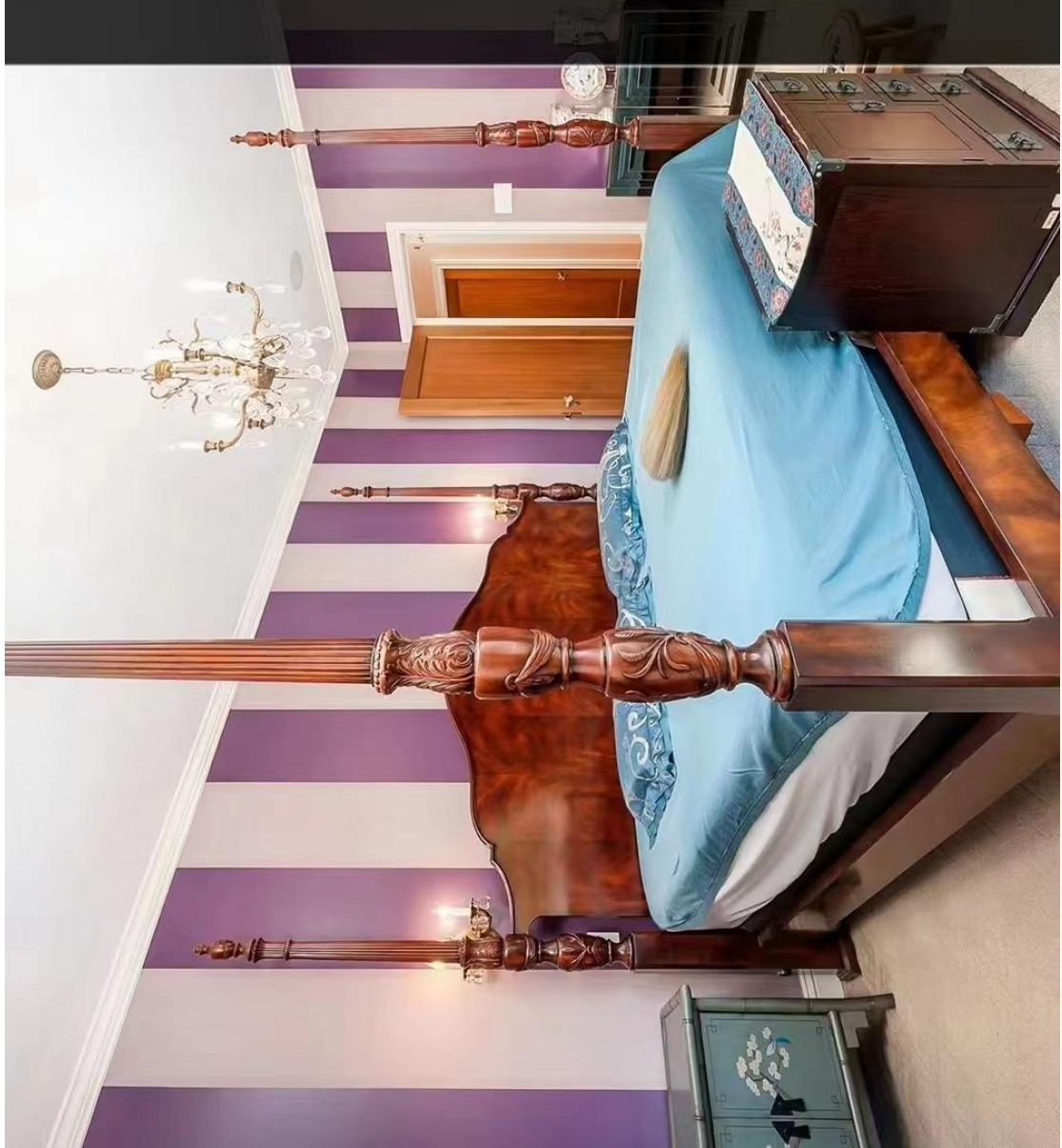
席梦思190-200-31  
席梦思190-200-25

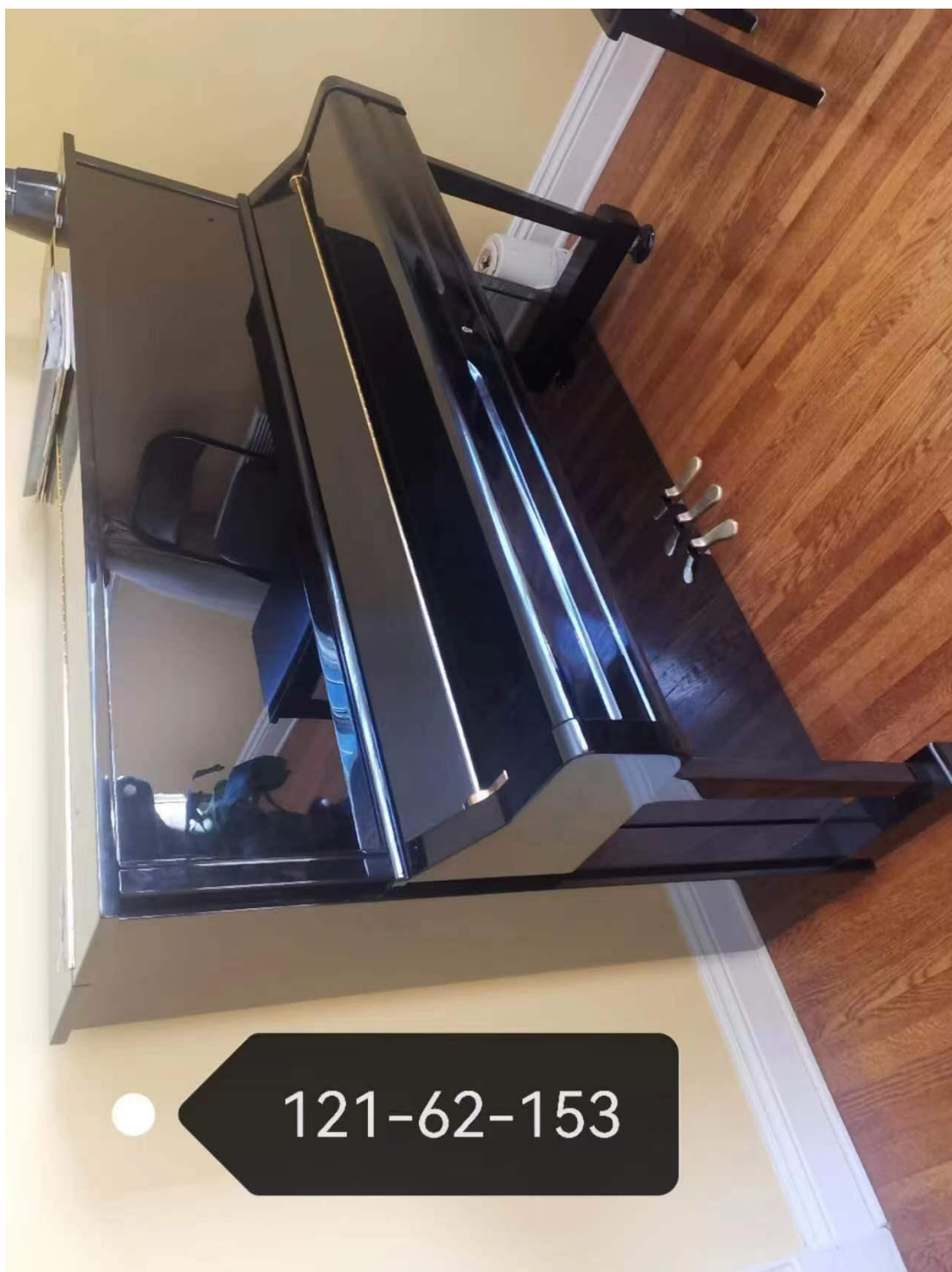
Simmons  
mattress



床头215-155-12  
床尾215-76-12  
侧板2块200-15-4  
柱子4根151-11-4

桃花心木  
mahogany





● 121-62-153

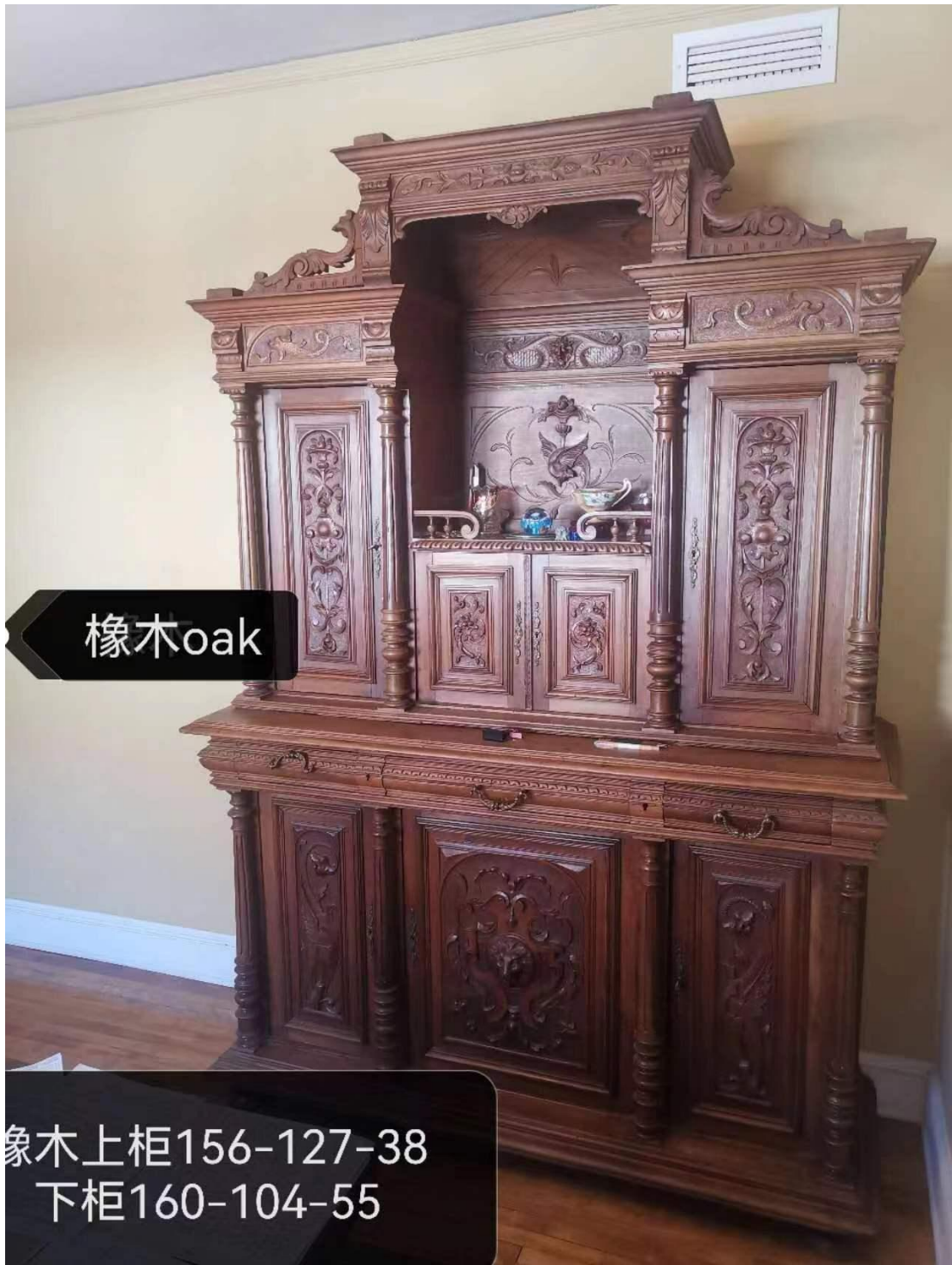
胡桃木  
桌50-70-77  
椅35-35-90  
镜子可置桌下



胡桃木walnut

88-132-51





橡木oak

象木上柜156-127-38  
下柜160-104-55



100-50-80

玫瑰木  
Rose wood

点击编辑文字

